



Access Statement

Introduction

The Museum of Carpet is housed in Stour Vale Mill, a Grade II listed building. It was a working carpet factory from 1855 until 2007. The Museum is located in what were the offices and warehouse. The Museum opened in 2012. It is a wonderful resource for the community with excellent facilities.

- Archive and library
- Conference facilities, meeting rooms and activity spaces
- Galleries and exhibitions
- Free entry to gift and book shop
- Tailor made group and school visits
- Volunteering opportunities
- Working looms



Before your visit

You can contact us by any of the following methods

Post: Stour Vale Mill, Green Street, Kidderminster, DY10 2UU

Phone: 01562 69028

Email: enquiries@museumofcarpet.org.uk

Getting to us

The Museum of Carpet is located on Green Street, the entrance to museum is on the left hand side of the Morrisons Building nearest to Green Street

Getting here by train: The museum is 0.4 miles from Kidderminster Train Station. For information about trains to/from Kidderminster, visit www.westmidlandsrailway.co.uk

Getting here by bus: The nearest bus stop is Green Street and the Kidderminster bus station is 0.3 miles away. www.worcestershire.gov.uk/info/20021/bus_travel

Taxi companies with wheelchair accessible vehicles: Regency Taxi 01562 66666

Car Parking

The museum does not have its own parking. There is a pay and display car park opposite the museum adjacent to the Aldi supermarket. Disabled badge holders can park without time restrictions.

Your Visit



Museum entrance



Ground Floor

On the ground floor you will find the museum galleries, gift shop, reception desk, toilets, handloom workshop and the weaving shed.

The flooring is all level and there no stairs or steps. The flooring in the reception, gift shop and handloom workshop is wooden. The flooring in the galleries is carpet and the weaving shed has a cement floor.

Shop counter is at a height of 87cm and the chip and pin terminal is at a height of 76cm. Display shelves are at a variety of heights

Most price labels are in a large size font, while some labels are smaller, staff are very happy to help with price enquiries.

The ground floor areas are lit by a mixture of spotlights, floodlights and tube lighting.

All routes through the building are well lit and are kept clear of obstacles. The lighting can be dimmed on request.

Fire exits are clearly signposted.

There are chairs situated throughout the museum.

When running, the power looms produce a lot of noise. Ear defenders are available for use and the looms runs only for 2 minutes maximum and are within recommended guidelines.

There are videos to watch throughout the galleries. The volume can be changed for all videos on request.

Lift

The lift is at pavement level.

The lift is fully enclosed with a door measuring 89cm wide. There is a fixed horizontal handrail on the left inside the lift at a height of 90cm from the floor. The buttons are at a height of 100cm from the floor. The lift services both floors.



First Floor

On the first floor you will find the library, archive, rooms for hire, and toilets.

The stairs are 125cm wide; each tread is 16.5cm high and 30cm deep with a handrail at a height of 96cm. The surface of the stairs is wooden.

There are no further steps or stairs once on the first floor.

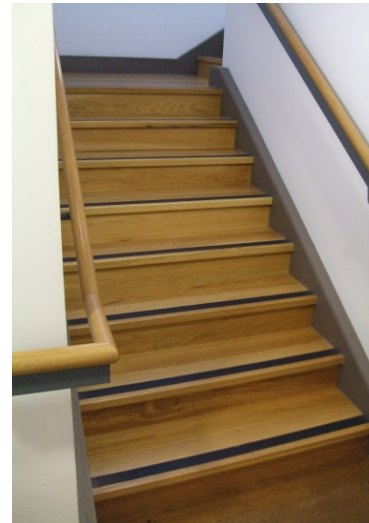
The first floor is lit by a variety of spotlights that operate on a motion sensor.

All rooms and corridors are well lit and kept free of obstacles.

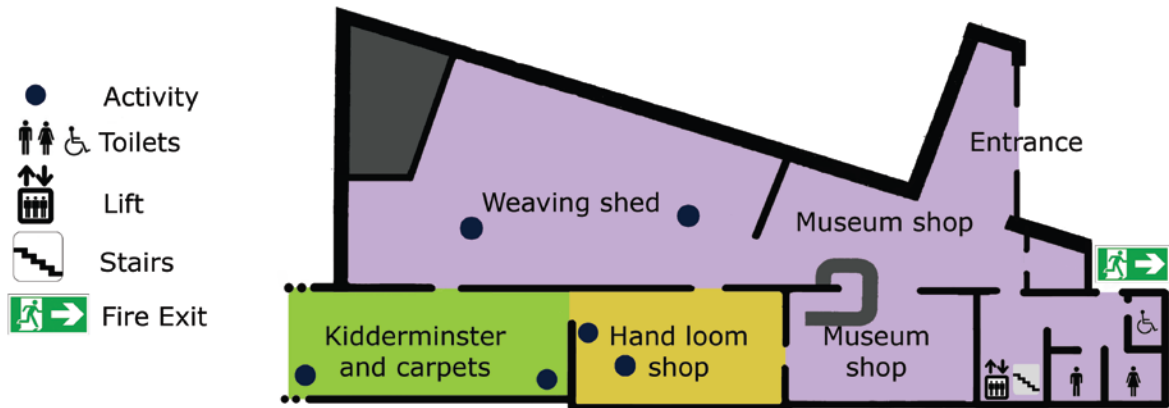
Fire exits are clearly signposted.

The rooms that are available for hire can be arranged to accommodate the particular needs of visitors. A kitchen is available for use when hiring a room. It is well lit and kitchen surface top is 90cm from the ground.

The library is well lit, is a quiet environment and the reading table is 71cm high.



Ground Floor Plan



First Floor Plan

